

Bürgerinformation  
Gutenberg-Museum Mainz



# 1

## Vorstellung Planungsteam



# 2

## Vorstellung Planungskonzept





Modellfoto mit Blick vom Liebfrauenplatz



Lageplan

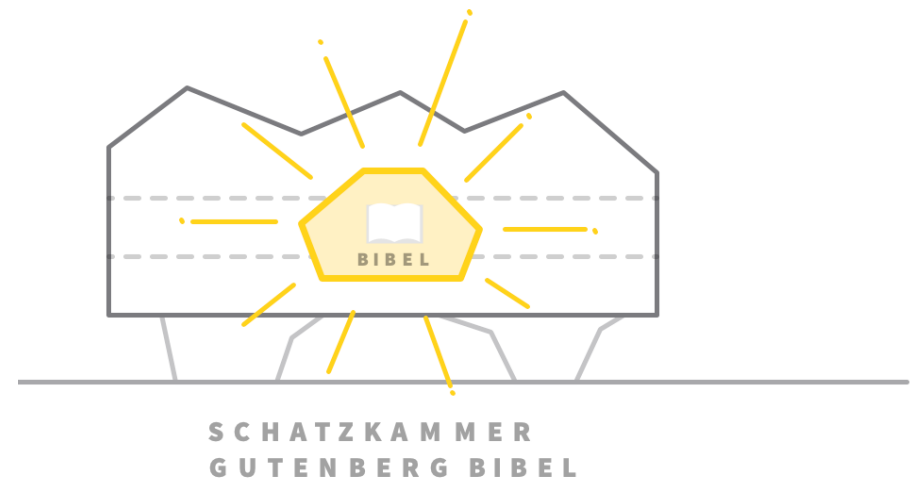


Piktogramm Städtebau



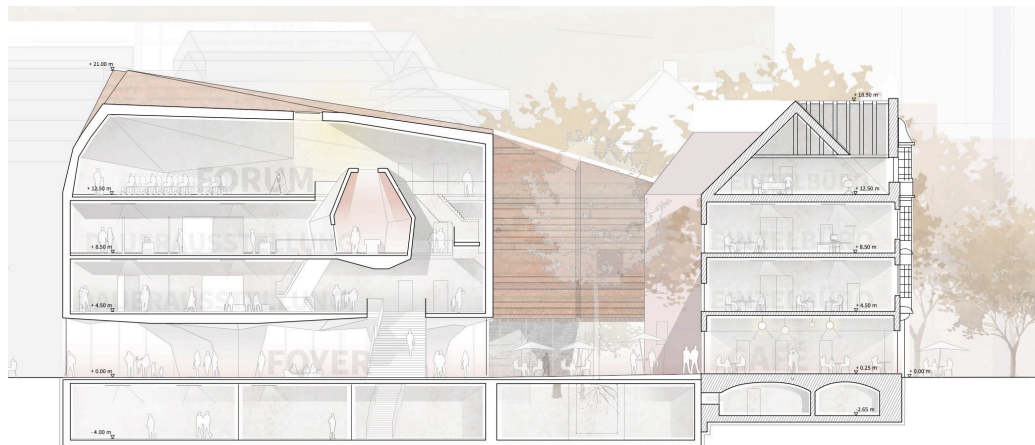
Altstadt

Gefaltete Dachlandschaft





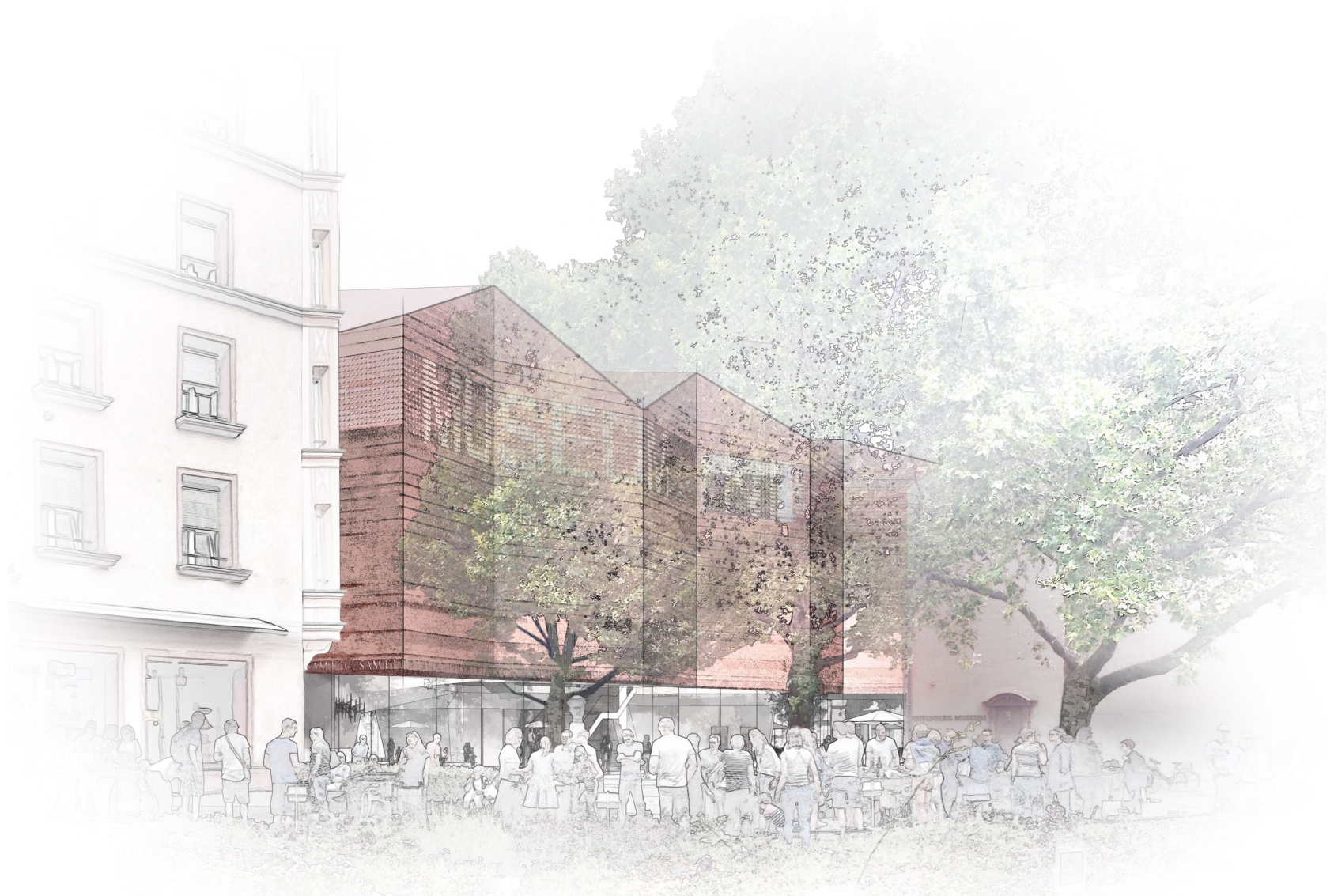
Ansicht vom Museumsplatz



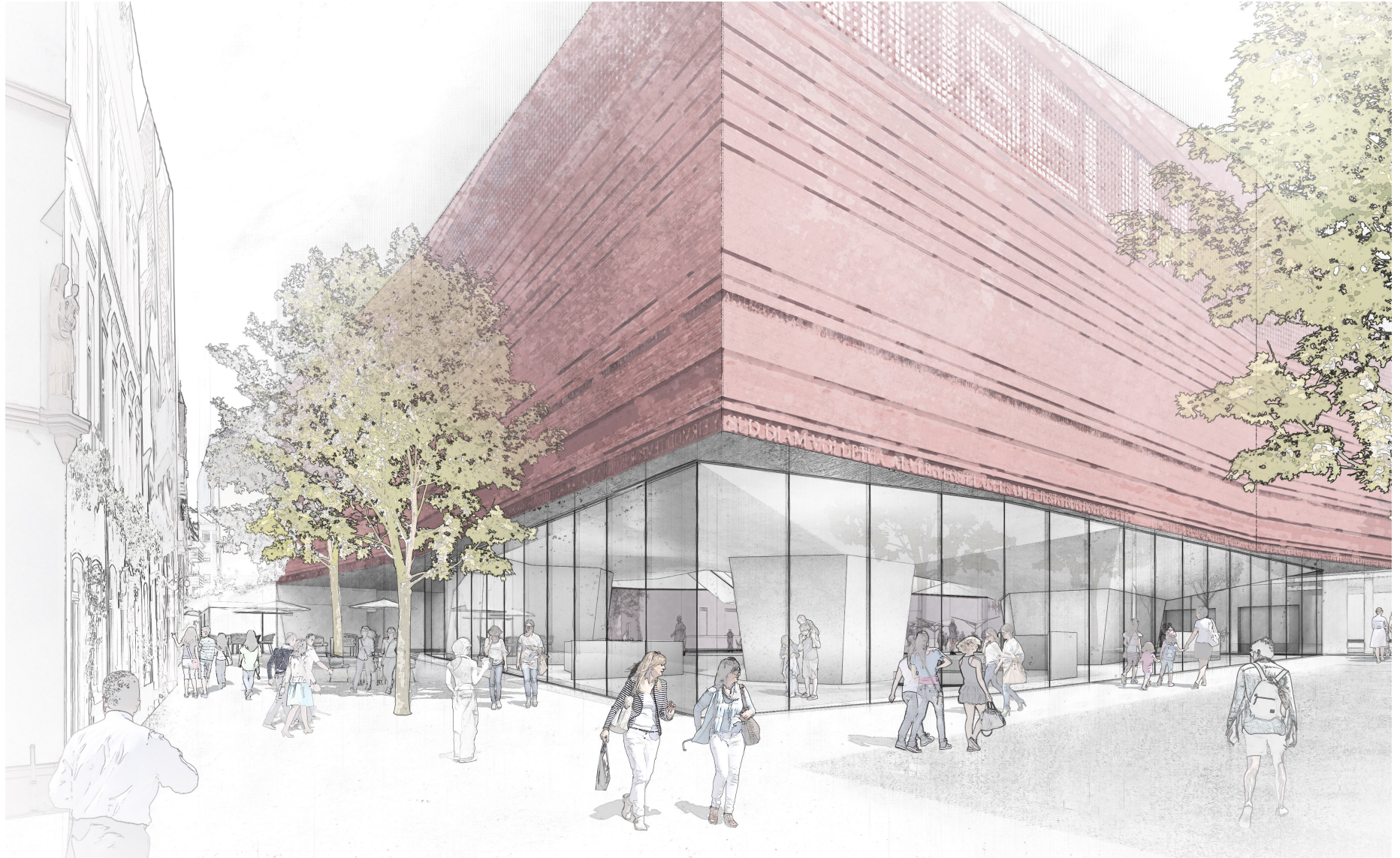
Schnitt Neubau/ Römischer Kaiser







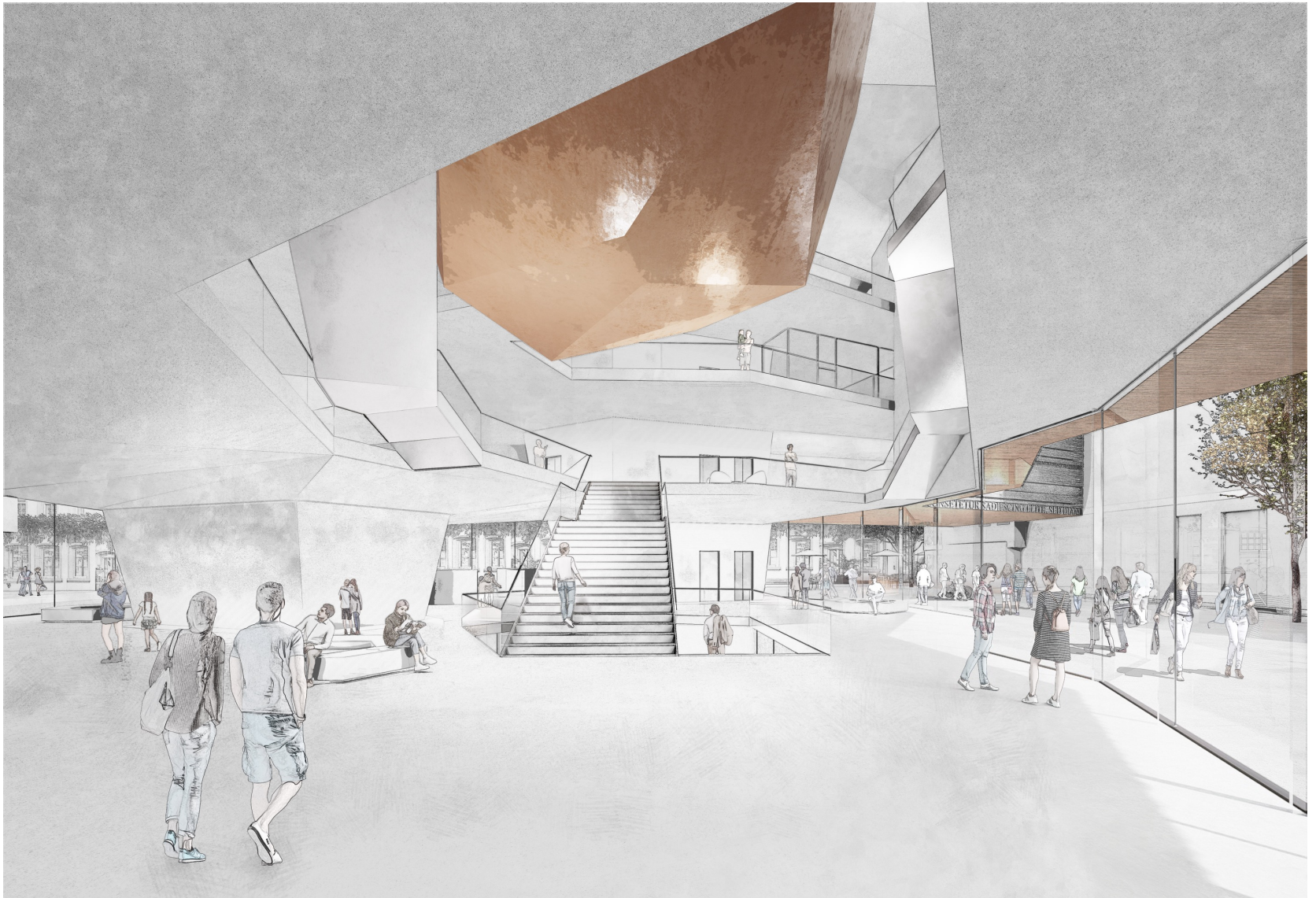


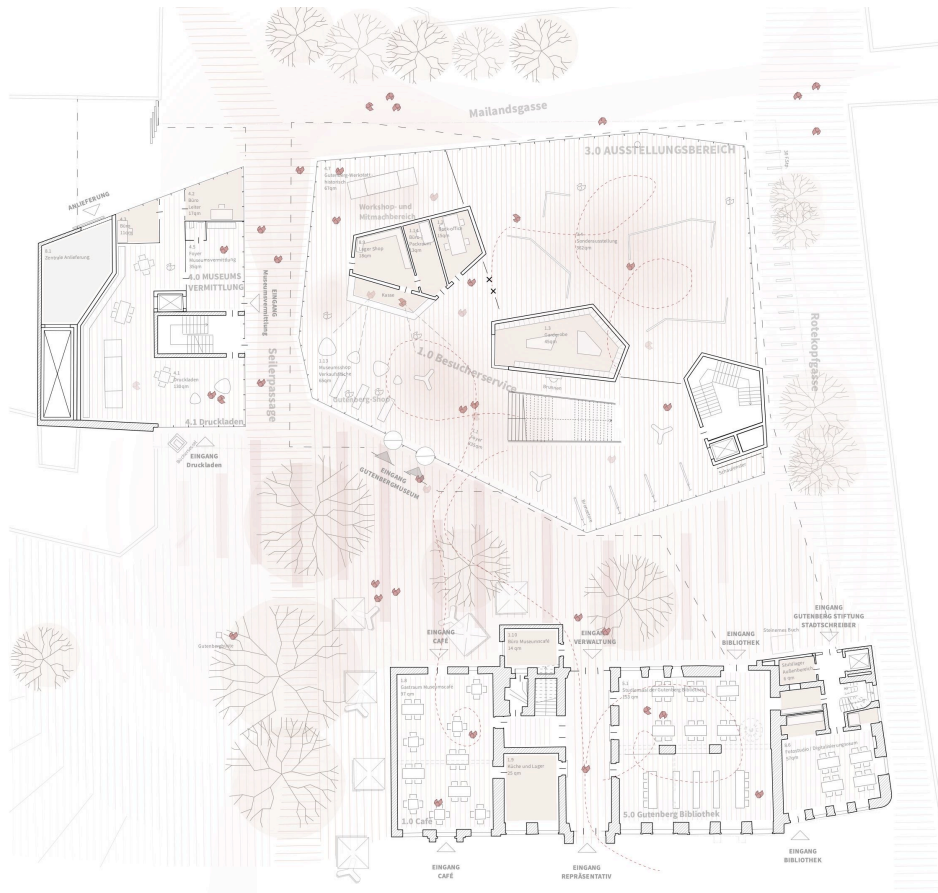
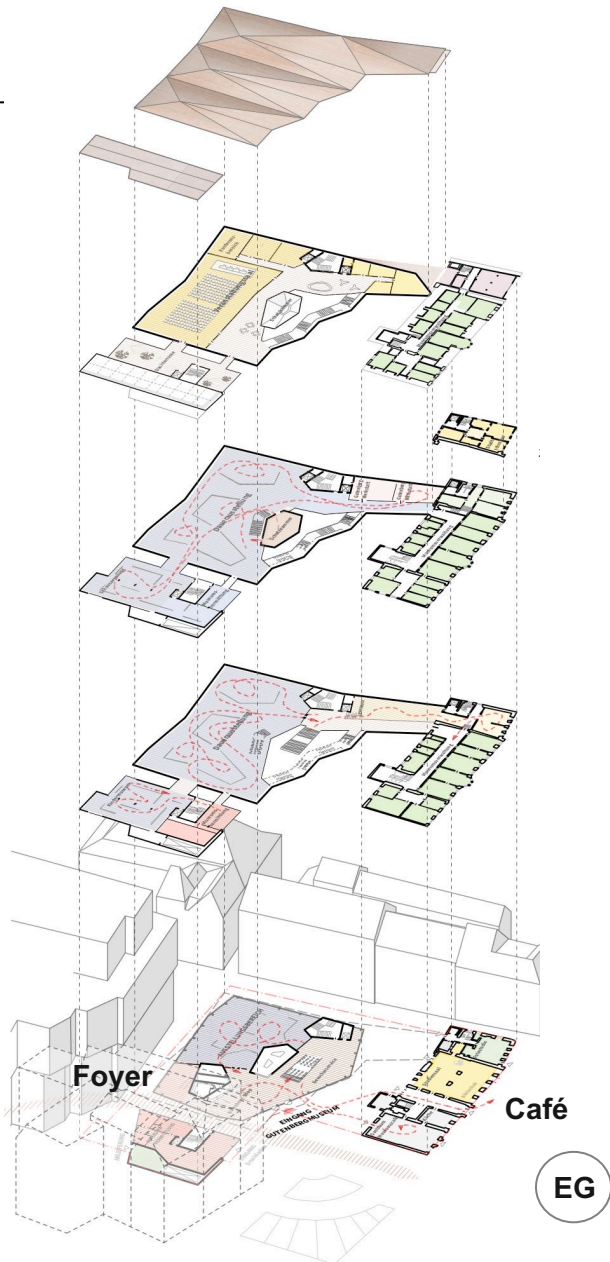






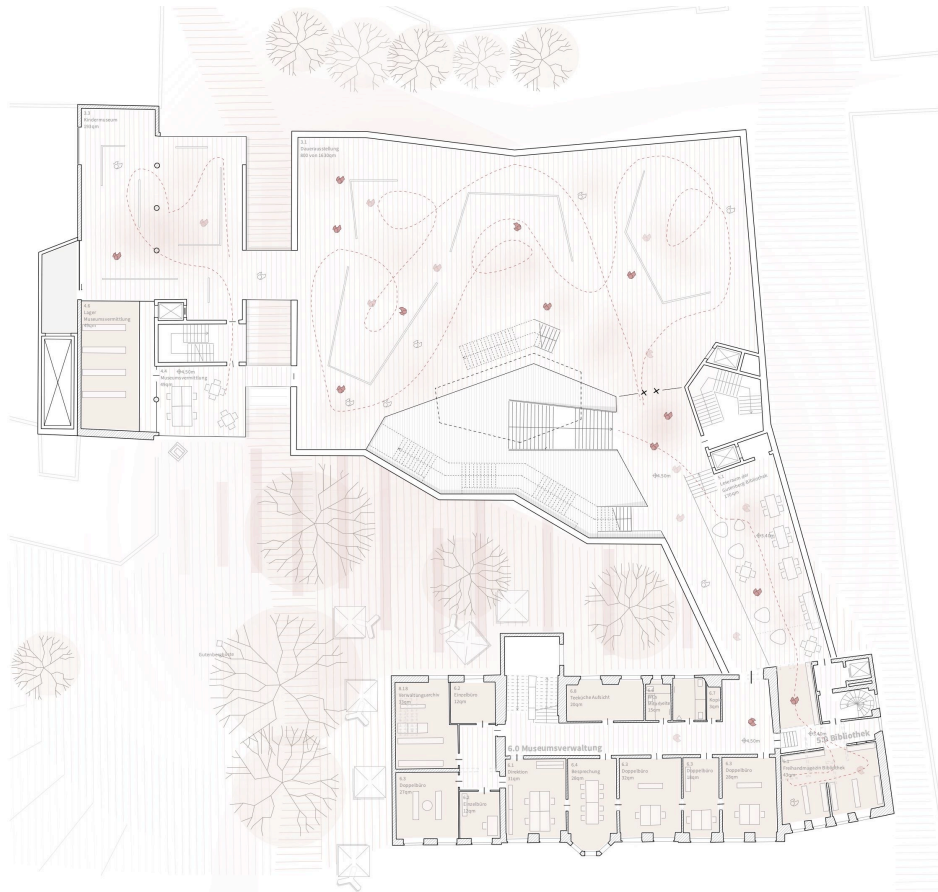
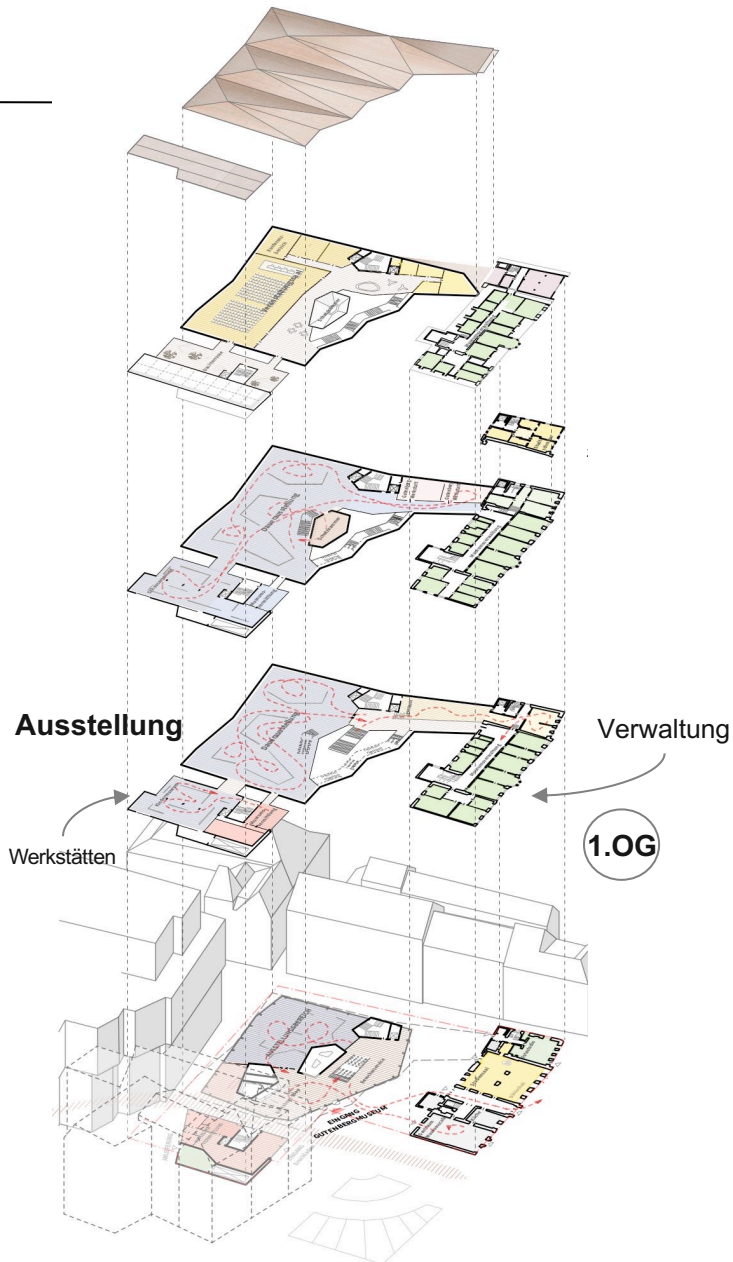




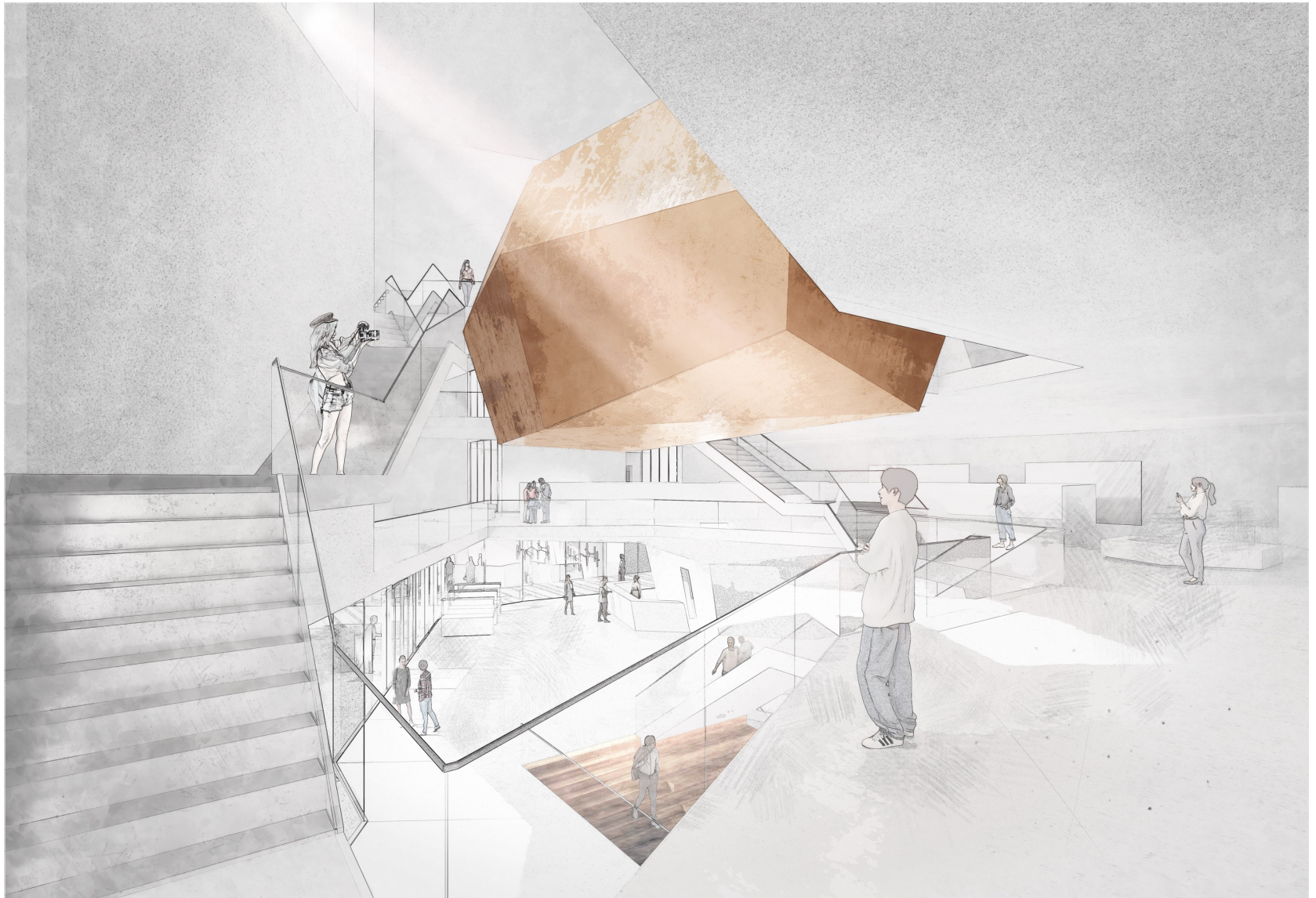


Erdgeschoss  
Stand Wettbewerb

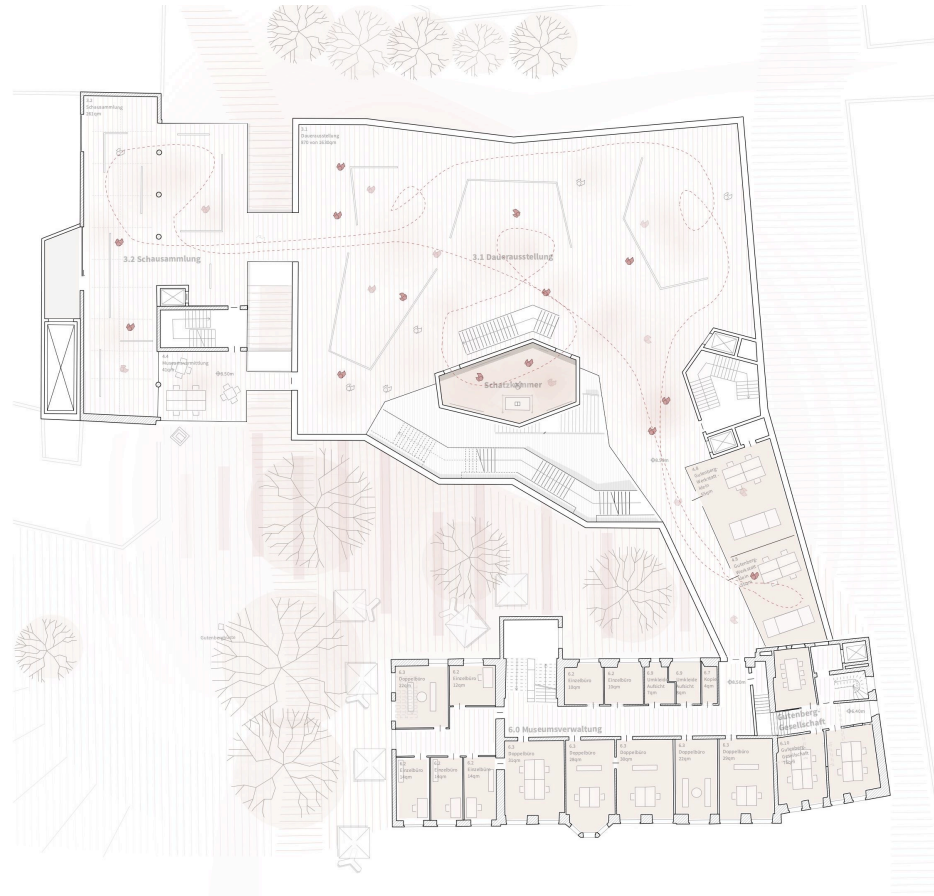
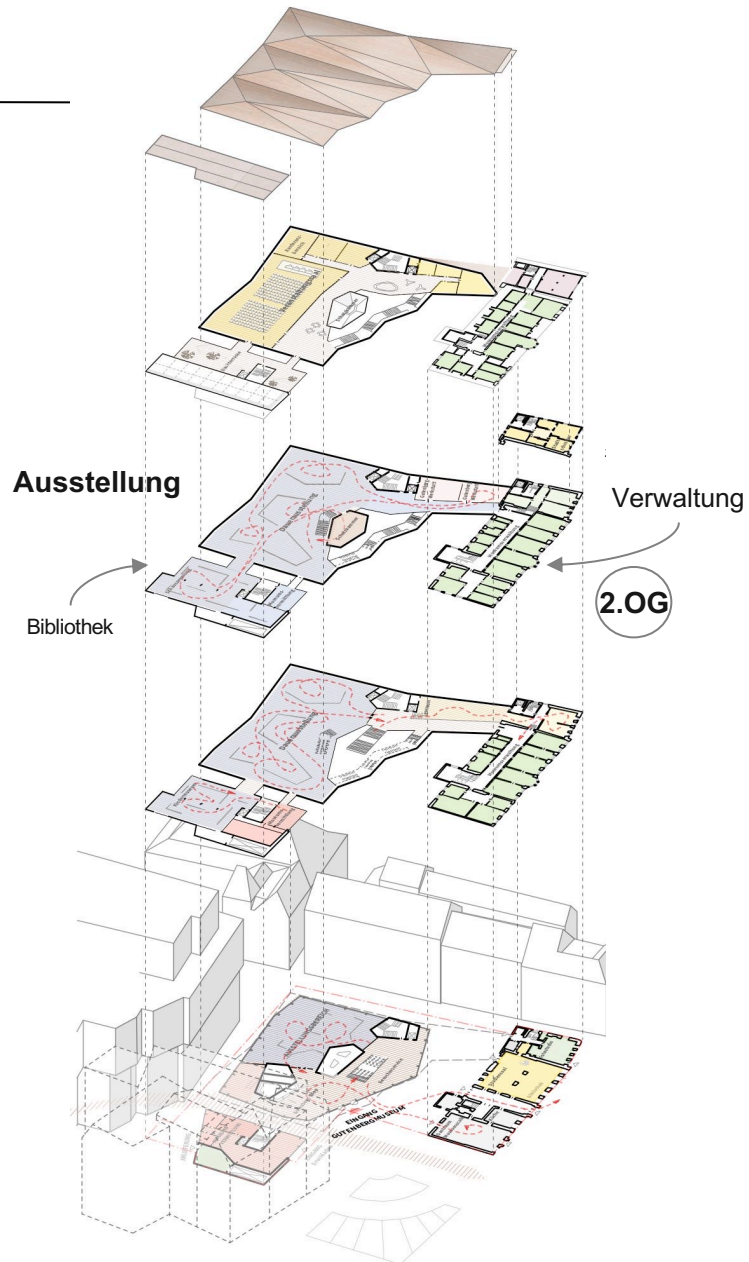




1. Obergeschoss  
Stand Wettbewerb







2. Obergeschoss  
Stand Wettbewerb

## Gutenberg – Forum

Verwaltung

Stadtschreiber

3.OG

